



SOLUBLE SALT METER SETTING THE NEW STANDARD IN SALT MEASUREMENT

Hedon
Electronic developments

Hedon Electronic Developments

Visitors & Correspondence

Delftech Park - Elektronikaweg 15
2628 XG Delft - The Netherlands

Phone

Phone: +31 (0) 15 275 55 55
Fax: +31 (0) 15 275 55 50

Web

www.solublesaltmeter.com
sales@hedon.nl

Soluble Salt Meter - Setting the new standard in Salt Measurement



Get in Touch

HedoN Electronic Developments
Delftech Park
Elektronicaweg 15
2628 XG Delft
The Netherlands

Phone: +31 (0) 15 275 55 55

Fax: +31 (0) 15 275 55 50

www.solublesaltmeter.com
sales@hedon.nl

Soluble Salt Meter

The Soluble Salt Meter was developed specifically to improve current methods of establishing surface cleanliness. The goals in developing the Soluble Salt Meter were to:

- Improve the time, quality, and accuracy in field analysis
- Eliminate use of syringe needles
- Develop a paperless instrument
- Automate water dosing and washing system
- Eliminate consumables (patches and syringes)
- Exactly replicate the Bresle patch protocol
- Eliminate residue left behind from Bresle and other adhesive patches



The Soluble Salt Meter is the approved alternative for use as a replacement to the Bresle patch method equivalent to ISO Standard 8502—9 (Field Method for the conductometric determination of watersoluble salts in accordance with NACE SP0508-2008).

Background

The presence of soluble salts on a surface is detrimental to applied protective coatings. As such, there are set stringent requirements for maximum allowable soluble salt concentrations for various applications. In order to test for surface cleanliness, surface contaminants must be extracted and analyzed. In the Bresle method, which is described in ISO 8502-6, a flexible cell is applied to the surface in question and injected by syringe with deionized water. Surface salts are dissolved into this solution that is removed and tested for conductivity. Conductivity measurements, recorded in microsiemens per centimeter ($\mu\text{S}/\text{cm}$), correspond to the concentration of dissolved ions in the solution. A high conductivity measurement indicates a high level of dissolved ions and in turn salt contamination on the surface. ISO 8502-9 provides a method to convert conductivity measurements to equivalent concentration of NaCl.



Current Method

Conventional methods for measuring the soluble salts remaining on a substrate prior to paint application (specifically the Bresle patch method) are tedious, time consuming (approximately 8 minutes per test), and may leave adhesive residue on the surface. In addition these methods can be expensive (e.g. each Bresle patch costs ~€ 5,- and can be used only once).

Equipment



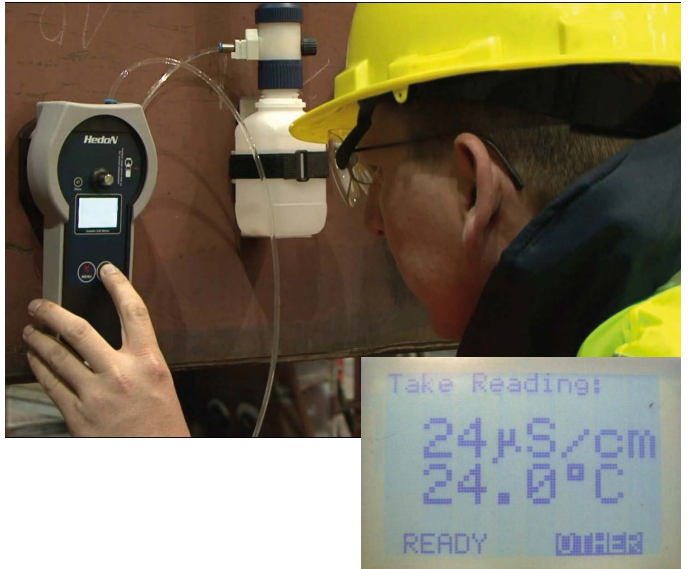
Drawbacks

- Time Requirements for Bresle method - Approximately eight minutes per test
- Requires Post Clean-up Process - Removal of sticky film
- Seventeen Step Process
- Built in Errors
- Results in Poor Quality Assurance and Inspection - Due to tedious process - Reproducibility and accuracy
- Expensive consumables (patches)



The Solution: Soluble Salt Meter

A new inspection tool has been developed to replace the Bresle patch method for soluble salt de-termination. This Soluble Salt Meter, for which United States Patent No. 8,252,600 was issued on August 28 2012, was designed around the current Bresle patch salt inspection method. The Soluble Salt Meter test protocol exactly duplicates the Bresle process, except that measurements are automated and there are no consumables. The complete test sequence requires only one minute. The Soluble Salt Meter is approved as an authorized alternative to the Bresle patch method.



Equipment



GENERAL ACCEPTED CRITERIA

| | | |
|------------|--------------------|-------------|
| NORSOK | M-501 | 20-50 mg/m2 |
| DNV | RP-F102 | 20 mg/m2 |
| IMO (PSPC) | MSC-215(82) | 50 mg/m2 |
| IMO (PSPC) | MSC.244(83) | 50 mg/m2 |
| NAVSEA | FY-12 (CH1) 009-32 | 30-70 uS/cm |

Benefits

- Accurate, easy measurements
- Repeatable results
- Rugged, industrial hardened measurement device
- Simple operating instructions
- Reduced process steps (17 steps reduced to 6 steps)
- Reduced process time (only one minute reading to reading)
- Eliminate process induced surface contamination (sticky residue)
- Equipment easily transportable (tank inspections)
- Rugged, industrial hardened measurement device
- Improved safety (syringes/needles eliminated) -
Operator error minimized // Metered water injection // Automatic data recording feature

Side-by-Side Comparison

Technical Specifications

Bresle Patch

- Compartment Area: 1250 ± 13 mm² (square)
- Can vary 5% due to stretching
- Attachment Method: Adhesive
- Leaves residue
- Requires post measurement cleanup
- Water Injection Method: Syringe
- Prone to human error and injury
- Air Evacuation of patch:
 - Syringe
 - Time consuming
 - Prone to human error

Proces Procedures

Bresle Patch

1. Select Bresle patch, remove the protective paper and the punched-out material
2. Adhere patch to surface (attempting to mini-mize trapped air)
3. Fill syringe with 3ml deionized water
4. Inject half of the water into the patch.
5. Reposition needle and evacuate air.
6. Remove the needle from the patch. Holding the syringe with the needle pointing upwards, expel the air.
7. Re-insert the needle into the compartment and inject the remainder of the solvent
8. Agitate Bresle patch with finger for 10-20 sec-onds
9. Extract solution using syringe
10. Transfer solution in syringe to Horiba B-173 meter
11. Take reading;
12. Record reading by hand on QA sheet; NOTE: ISO 8502-6 dictates that during steps 3 to 10, it is essential that no solvent be lost from the patch or syringe. If any solvent is lost, the solution obtained shall be rejected.
13. Remove Bresle patch from surface;
14. Wipe remaining water from surface with rag
15. Clean any adhesive remaining on surface;
16. Clean and rinse out syringe;
17. Clean Horiba meter.

17 Total Steps (~8 minutes)

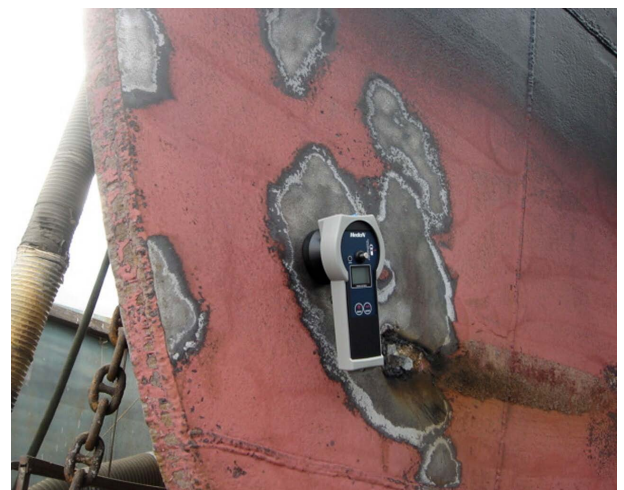
Soluble Salt Meter

- Compartment Area: 1250 mm² (circular)
- Fixed footprint
- Attachment Method: Magnetic
- No effect on surface quality
- Proven to seal over deep pits
- Water Injection Method: Automated
- Accurate metering valve (3.0 ± 0.04 ml)
- Air Evacuation: Automated
- Chamber relaxes automatically
- No time delays

Soluble Salt Meter

1. Attach meter to surface;
2. Inject deionized water into measurement chamber with one press of the dose bottle;
3. Meter automatically agitates solution (~ 40 seconds);
4. Meter automatically takes reading; - Display reading on LCD screen - Stores values electronically
5. Wipe remaining water from surface after removing SSM
6. Flush meter by turning over and injecting water from dose bottle.

6 Total Steps (1 minute)



Cost Comparison

This section includes a cost comparison between the Bresle method and the Soluble Salt Meter. The time per test is approximated to be 8 minutes per test* for inspectors and reflects additional time required to enter and track measurements by hand. The Soluble Salt Meter stores all data electronically, allowing easy data management and tracking.

Bresle Patch

- Time = 8 min/test
- Labor = € 60,-/hr (€ 1,00/min)
- Bresle Patch = € 5,-

€ 13,00 per measurement

€ 9.360,- per year **

* Based on observational data of actual shipyard inspections.

** This is an estimate based on the labor and materials cost for 60 measurements per month. These figures do not include expenses such as syringes, deionized water, and conductivity meters. The initial Soluble Salt Meter investment cost is returned with approximately 330 measurements (unlimited license). Depending on usage this could be as little as 3 months.

Soluble Salt Meter

- Time = 1 min/test
- Labor = € 60,-/hr (€ 1,00/min)
- No consumable

€ 1,00 per measurement

€ 720,- per year **

The Soluble Salt Meter overcomes many of the inherent challenges of taking QA (Quality Assurance) measurements. By reducing test cycle time and automating data measurement and tracking, the Soluble Salt Meter will save money and improve QA.

- Cuts sampling/inspection time
- Simplifies the measurement process (17 steps reduced to 6 steps)
- Improves safety by eliminating the need for syringes and needles
- Minimizes operator error through automatic metered water injection and electronic recording of measurements
- Doesn't leave sticky residue on the substrate
- Extracts surface salts more reliably for more accurate readings
- Is equivalent to ISO Standard 8502-6 Extraction of soluble contaminants for analysis -- The Bresle method
- Meets the requirements of ISO Standard 8502-9 Field method for the conductometric determination of water-soluble salts.

Pricing

The Soluble Salt Meter comes with several options, each with its own benefits. In the Soluble Salt Meter it is possible to buy measurements like they were consumables. This made it possible to offer the following options:

Buy Lite

Experiencing the benefits of the Soluble Salt Meter starts by purchasing the Soluble Salt Meter kit (Buy lite). This kit is all you need to get started and contains:

- Soluble Salt Meter
- Soluble Salt Meter adapter flat surface
- Dispenser
- Power supply
- USB cable and PC Software
- Calibration fluid
- Carrying case
- Certificate of performance
- 50 credit readings

Buy Licenses and Credits

Purchase additional measurements (credits) only when you need them or add the license for unlimited measurements.

Buy Options

Adapters for measurement pipes with diameters from 8" till 42" are available. (see next page)

Curved adapters for Soluble Salt Meter

Salt measurement with the Soluble Salt Meter on curved surfaces is made possible by using one of the curved adapters. Just attach the fitting adapter to the Soluble Salt Meter and get accurate measurements instantly.



DIMENSIONS

- 1 Soluble Salt Meter Adapter flat surface
- 2 Soluble Salt Meter Adapter pipe diameter 65-105cm (26"-42")
- 3 Soluble Salt Meter Adapter pipe diameter 35-60cm (14"-24")
- 4 Soluble Salt Meter Adapter pipe diameter 20-30cm (8"-12")



Specifications

| | |
|------------------------------|---------------------------------------------------------------------------------------------------------------------------------------------------------------------------------------------------------------------------------------------------------------------------------------------------------------------------|
| Standards | Equivalent to ISO Standard 8502-9 (Field method for the conductometric determination of water-soluble salts; The Bresle method) in accordance with NACE SP0508-2008. |
| Measurement Area | 1250 mm (circular) fixed footprint |
| Attachment Method | Magnetic with silicone seal (no effect on surface quality; proven to seal over deep pits) |
| Water Injection Method | Automated, with simple press of fixed volume dispenser |
| Dose | 3 ± 0.05 ml |
| Measurement Process Steps | 5 |
| Total Process Time | 60 seconds (measurement to measurement) |
| Measurement Range | 0-100 µS/cm |
| Resolution | 1 µS/cm |
| Measurement Accuracy | ± 3 µS/cm |
| Surface Temperature Range | 5 - 50 °C (41 - 122 °F) |
| Temperature probe accuracy | ± 0,3 °C (± 0,54 °F) |
| Diameter of curvature: | <ul style="list-style-type: none"> - Standard measuring head >= 44 inch / 1100mm - Measuring head 1 26 <=> 42 inch / 650 <=> 1050mm - Measuring head 2 14 <=> 24 inch / 350 <=> 600 mm - Measuring head 3 8 <=> 12 inch / 200 <=> 300 mm |
| Readout | µS/cm or mg/m ² |
| Memory | Holds up to 1000 measurements (10 batches of up to 100 measurements each) |
| Connectivity | via USB with PC or laptop |
| Power Supply | Lithium-ion rechargeable battery |
| IP Rating | IP54 |
| Dimensions (Instrument only) | 21 x 10 x 8 cm |
| Weight (Instrument only) | 780 gr. |



HedoN
Electronic developments

HedoN Electronic Developments



Visitors & Correspondence
Delftech Park - Elektronicaweg 15
2628 XG Delft - The Netherlands

Phone
Phone: +31 (0) 15 275 55 55
Fax: +31 (0) 15 275 55 50

Web
www.solublesaltmeter.com
sales@hedon.nl